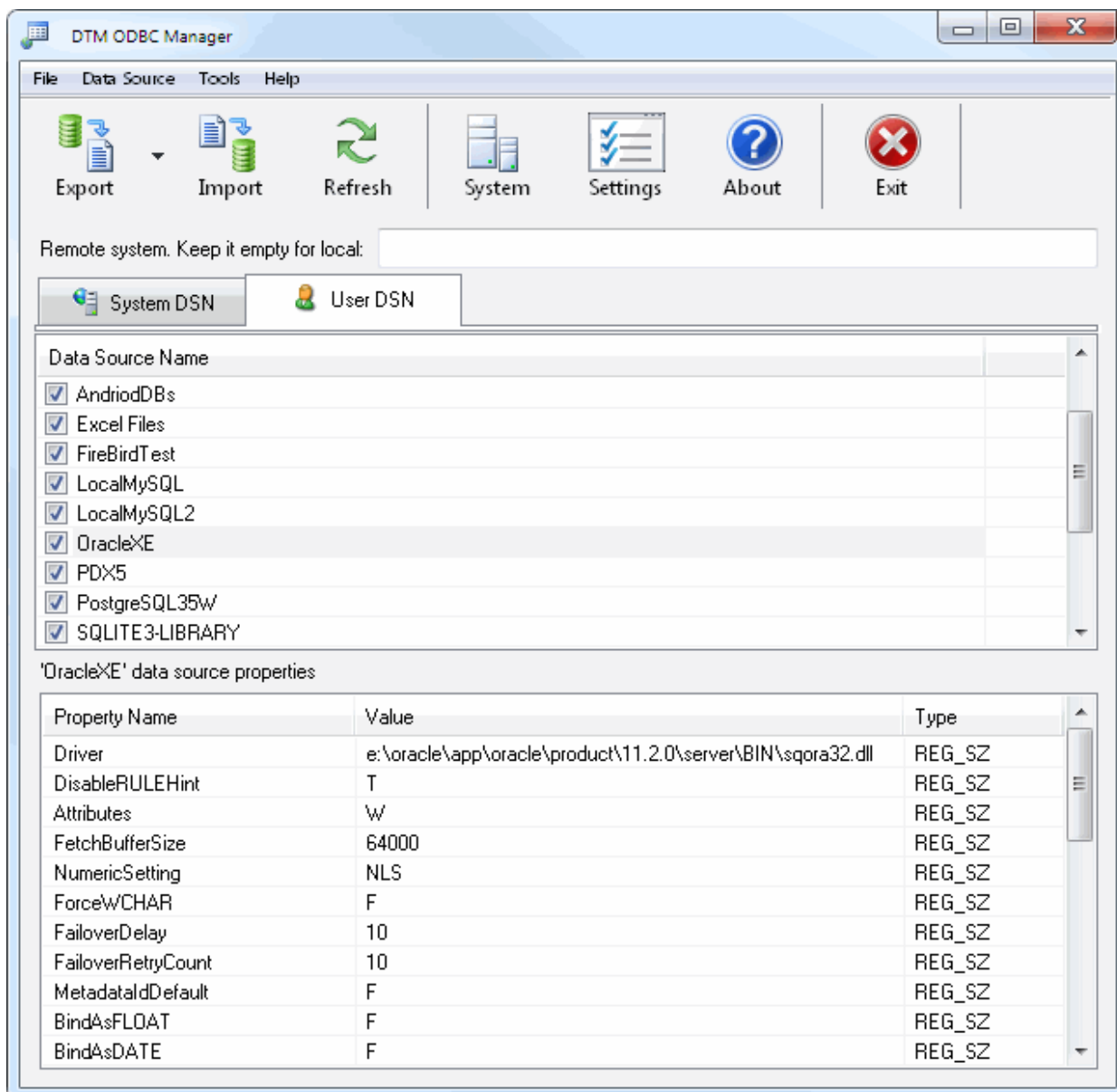


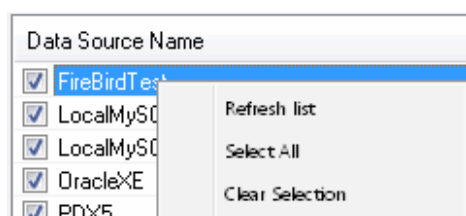
# DTM ODBC manager

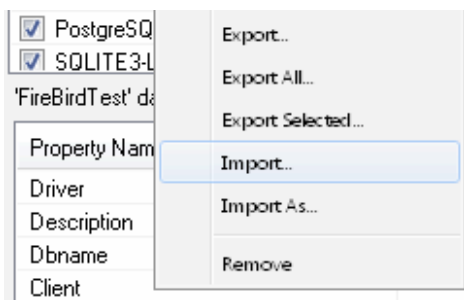
DTM ODBC manager is a simple and easy-to-use ODBC Data Sources manager. The program allows you to export data source definitions into a file and then restore it on a local or remote system.

DTM ODBC manager is an indispensable tool for database administrators (DBA) or developers who have to transfer data source definitions between computers and is a perfect addition to the system [ODBC Administrator](#). The program allows you to audit local and remote data source definitions, remove DSNs and import definitions created on one of the computers on a remote system right from your workplace. To do it, "Remote Registry Service" must be running on the system you work with and it must have all necessary drivers installed. The program operates both with system DSN and user DSN. DTM ODBC manager allows you to operate not only with a single DSN, but also to export or import all existing items or those selected in the list.



The context menu of the item allows users to perform most important operations with currently selected DSN or the list:





See also: 32 and 64 bit [versions](#).

DTM ODBC manager supports the following command line switches:

- is[<filename>]** - import DSN definitions from the file as a system data sources
- iu[<filename>]** - import DSN definitions from the file as a user data sources
- es[<filename>]** - export all system DSNs definitions to the file
- eu[<filename>]** - export all user DSNs definitions to the file
- eos<dsn>** - export one system DSN definition to the file specified by -f parameter
- eou<dsn>** - export one user DSN definition to the file specified by -f parameter
- rs<dsn>** - remove one system DSN
- ru<dsn>** - remove one user DSN
- f<filename>** - specify the file name for export and import operations
- s<system>** - remote system name

Examples:

**-esd:\dsndef\_S2.dsn -sSERVER2**  
runs export system DSNs from SERVER2 to local file d:\dsndef\_S2.dsn

**-eu -f"d:\dsn definitions\user.dsn"**  
runs export local user DSNs to "d:\dsn definitions\user.dsn" file

'e' or 'i' specified parameter switches the program to console mode. The console mode is a mode when the program doesn't open any dialogs and doesn't need any interference from the user. This mode enables you to integrate the product with the Windows task scheduler as well as to execute packages prepared beforehand according to the schedule.



## 32 and 64 bit versions

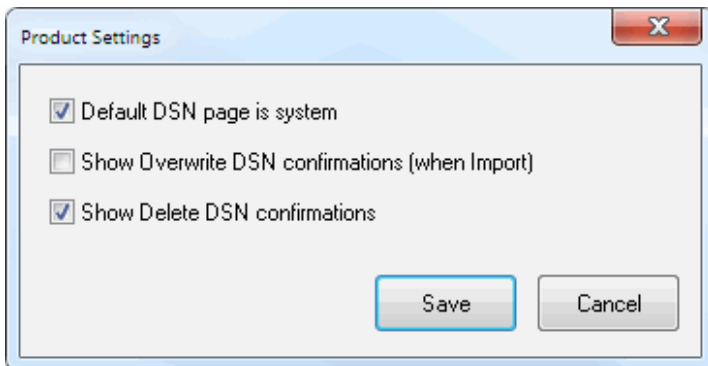
DTM ODBC manager has 32 (odbcmgr.exe) and 64 b(odbcmgr\_x64.exe) it versions. The user should use same version for export and import.

For some cases, the program can import file from another version but manual revision is required in this case due to different drivers or parameters name.

See also: system [ODBC Administrator](#) call.

There are three options:

- Should the program open "System" or "User" list of the data sources by default.
- Should it ask user for confirmation on import.
- Should it ask user for confirmation on data source removing.



**Q:** How to copy a data source definition from one computer to another.

**A:** Select the necessary DSNs need in the list. Export this list into a file. Use the "Remote System" edit box to enter the name of the remote computer (MyServer, for example) on your LAN and click the "Refresh" button. After the list is displayed, select the corresponding tab for system or user data sources and import them from the file created before.

**Q:** How to install DTM ODBC manager to remote system?

**A:** You need the business license for this purpose. It has Windows Installer for corporate remote or silent installation.



## System ODBC Administrator

Please keep in mind that the program always run ("Tools->ODBC Administrator" menu item) the same ODBC Administrator version (32 bit or 64 bit depends on the program build).

To run 32 bit ODBC Administrator under 64 bit system manually you should use direct path **%WINDIR%\SysWOW64\odbcad32.exe**

If you have some question or unusual problem feel free to contact the DTM ODBC manager technical support at [support@sqledit.com](mailto:support@sqledit.com)

When you contact technical support, you should be prepared to provide the following information:

- DTM ODBC manager version (you can find this information from About menu item of Help menu).
- Type and version of the ODBC or IDAPI driver or OLE DB provider.
- DBMS version and operating system version (including service pack version, if applicable).
- DTM ODBC manager Log file.
- A description of what you do before the problem occurs.
- Error messages you see when the problem occurs.
- Your name, company name and how to contact you.

See Also: [log\\_file](#)





## Program Installation

To run installation program:

- Open the windows Start menu and select "Run" item
- Select or enter installation file name and path (odmcmgr.exe or odmcmgr\_d.exe)\* and click OK

\* - professional and enterprise editions of the tool may have another suffix.

Notes:

- Please be sure that existing version of the tool is not running when you install a new version.
- We recommend to [uninstalling](#) old version of the DTM ODBC manager before new version installation.
- Installation by administrator for another user is supported for most environments.



## Uninstall the Software

The Uninstall feature removes all installed DTM ODBC manager components and all records in the Windows registry made by the installation script. You can uninstall this program by selecting the "**DTM ODBC manager**" item in "**Add/Remove Programs Dialog**" in "**Control Panel**".

Another uninstallation way is to run "unins000.exe" from the product's folder directly.

**Important!** Uninstall feature of the program does not remove files and objects created by users such as configuration files, registry records etc.

[DTM SQL Editor](http://www.sqledit.com/editor) ([www.sqledit.com/editor](http://www.sqledit.com/editor)) is a set of powerful database management tools that allow you to achieve two goals - to have unified access to different types of databases and to have a set of solutions that makes processing your data easy. DTM SQL Editor gives database users, developers and administrators an ability to access different databases, whether desktop or client-server ones (provided you have ODBC driver installed). This is very convenient, since most organizations use several different types of databases installed and each stores data in different formats and with varying parameters. Having a program that can get data from various sources is often essential. Furthermore, in addition to letting you quickly switch between different data sources, DTM SQL Editor lets you see database schema and results of the query execution.

[DTM Migration Kit](http://www.sqledit.com/mk) ([www.sqledit.com/mk](http://www.sqledit.com/mk)) is a powerful yet simple data migration tool that comes in handy if you run multiple databases. Use it to import, export or migrate data between different data sources (ODBC, OLE DB, or Oracle Call Interface supported). The program is fully automatic and supports all popular database formats. Simple visual interface lets you set own transformation and flow control rules to give you added flexibility.

[DTM Schema Reporter](http://www.sqledit.com/sr) ([www.sqledit.com/sr](http://www.sqledit.com/sr)) is a reporting tool for database schema. The program creates reports in RTF, HTML, XML or plain text formats and supports all common database interfaces - ODBC, OLE DB, or even Oracle Call Interface. This utility helps technical writers and database administrators create a report of any complexity level within seconds. Also, you can alter table order in the report and manually add annotations to the individual tables.

[DTM Data Generator](http://www.sqledit.com/dg) ([www.sqledit.com/dg](http://www.sqledit.com/dg)) is a simple, powerful and fully customizable utility that generates data for database testing purposes. Currently, database developers and administrators often have to spend hours of dull work to create test data sets before examining database performance. This tool makes all this unnecessary by automatically creating database objects AND sets of SQL statements, if necessary.

[DTM Data Editor](http://www.sqledit.com/de) ([www.sqledit.com/de](http://www.sqledit.com/de)) is a data viewer and editor for database professionals who are tired of wasting their time on mundane tasks. The program uses form-based interface and works with any ODBC data source. SQL statements are generated automatically and can be modified later. For data that has foreign key - primary key relation, there are options to enter values manually or select them from a list, which is much faster.

[DTM DB Stress](http://www.sqledit.com/stress) ([www.sqledit.com/stress](http://www.sqledit.com/stress)) is a utility for stress testing the server parts of information systems and applications, as well as DBMSs and servers themselves. This tool allows you to create and configure a continuous set of requests to the server of the OLAP (query execution) and OLTP (adding, modifying and deleting data in the database) types. At the same time, the user can flexibly change both the number and the priority of this or that type of requests to a database or an application.

[DTM Data Modeler](http://www.sqledit.com/dm) ([www.sqledit.com/dm](http://www.sqledit.com/dm)) is a CASE tool for database developers that supports both forward and reverse engineering. It is an easy-to-use tool allowing you to work both with logical and physical data models in the form of an entity-relationship diagram. The product is intended for database architects and developers and works with data sources via the ODBC interface, which means compatibility with all modern DBMS. Along with basic model properties (sets of entities and relationships between them), the program allows you to create indexes and triggers on the physical level corresponding to the tables of the database that is modeled.

[DTM Data Scrubber](http://www.sqledit.com/scr) ([www.sqledit.com/scr](http://www.sqledit.com/scr)) is a set of intelligent tools for data verification (audit) and scrubbing (cleaning). Depending on user-defined rules and data properties, the program either creates a report about the actual state of affairs or performs database data correction.

[DTM Data Comparer](http://www.sqledit.com/dcmp) (www.sqledit.com/dcmp) is a visual tool for data compare and synchronization. The program successively views the contents of both tables basing on the order of ascending of unique key values and shows differences or creates synchronization script.

[DTM Schema Comparer](http://www.sqledit.com/scmp) (www.sqledit.com/scmp) is a tool for database schemas comparison and synchronization. The comparison process supports tables, views, indexes, triggers and stored procedures. The visual representation of database schemas as a tree makes the comparison process more comfortable.

[DTM Query Reporter](http://www.sqledit.com/qr) (www.sqledit.com/qr) is a reporting tool for database query. This utility helps technical writers, developers and database administrators create a report based on database query within seconds.

[DTM Schema Inspector](http://www.sqledit.com/si) (www.sqledit.com/si) is a database schema browsing and management tool that let you work with database schemas more effectively.

[DTM DB Event](http://www.sqledit.com/event) (www.sqledit.com/event) is a database monitoring and management tool. This utility allows the user to define a few situations (events). For each event the user can define what the program should do if the event is occur.

[DTM Flat File Generator](#). Easy to use tool that helps any developer or QA engineer to create test data file. It supports tab-delimited, CSV, fixed width and custom separated output files. The generator has powerful import and export file structure features.

[DTM Test XML Generator](#). The tool is powerful generator for XML documents with structure defined by user and random but realistic data. More than 30 predefined generators with powerful pattern engine. The rich import XML structure options are available.

[DTM Data Generator for Excel](#) is a tool for text Excel spreadsheet population. Easy to use interface based on predefined generators, rich value library and high performance.

[DTM Data Generator for JSON](#) produces JSON files with defined structure in a bulk manner. Fast and easy structure editor and smart import options helps the user to generate test set in a few clicks only.

[DTM Database Content Analyzer](#) is a statistical tool for database content. It collects a few dozens of most interesting data: database objects size, value frequency, clusters, etc. This tool replaces and extends "Statistics" report of obsolete versions DTM Schema Reporter.



## **DTM ODBC manager**

License for use and distribution

This license agreement covers versions 1.xx and 2.0x of DTM ODBC manager.

1. All copyrights to "DTM ODBC manager" (software) are exclusively owned by DTM soft.
2. This software is provided 'as-is', without any express or implied warranty. In no event will DTM soft be held liable for any consequences/damages arising from the use of this software.
3. This program is FreeWare. You can use it for personal, business, educational or any other need of yours, subject to the following restrictions:
  - A) You may not re-distribute this program without contacting the author and getting his consent. You may not charge any fee or re-distribution fee for it.
  - B) This notice may not be removed or altered from any distribution.
  - C) No form of decompilation/reverse engineering/disassembling parts or whole of the software be done.
  - D) You may not misrepresent the origin of the software.

## **DTM ODBC manager Business license**

The business license is suitable for corporate and enterprise use. You have to order it if you:

- have more than 5 installations of the software in your company
- need professional technical support
- need Windows Installer for silent or remote installation.

## **DTM ODBC manager OEM license**

The OEM license allows the user to redistribute the software with custom solutions.

### Log file

When running the program, you have to select one of menu items from "**Tools->Log file**" in order to view or truncate your Log file. The log file contains the detailed description of any errors and other events that occurred while processing script.

Default log file location is product's directory and the name is ERROR.LOG. When the user has no enough permissions DTM ODBC manager saves log to typical path like C:\Documents and Settings\\Application Data\odmcmgr.log or C:\Users\\AppData\Roaming\odmcmgr.log

The log file is a text file that contains three type of records:

1. The software product identification block: product name version and operating system information.
2. Error records: wrong SQL statements, exceptions, etc.
3. Notification and statistics.